



# Quick-Start INSTALLATION GUIDE



## USB Potentiostat

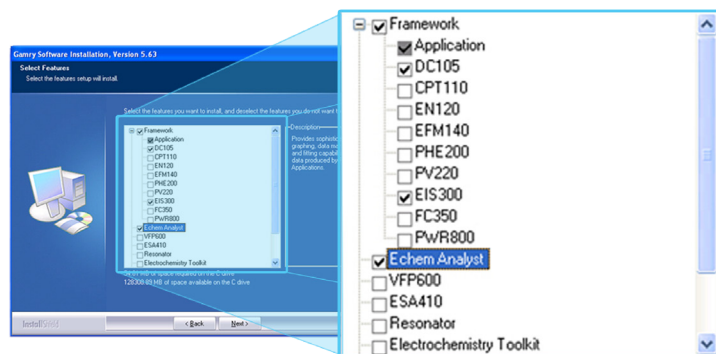
**1** Insert installation media and click 'Install Software'.



**2** The 'Gamry Software Installation' program will run.

**NOTE - If you have Gamry Software PREVIOUSLY INSTALLED:** You will be asked to remove previous versions of the software and the Gamry device drivers. Click 'Yes' - All previous data will be saved.

- When asked to select folder location, click 'Next'.
- Select software packages and additional hardware.

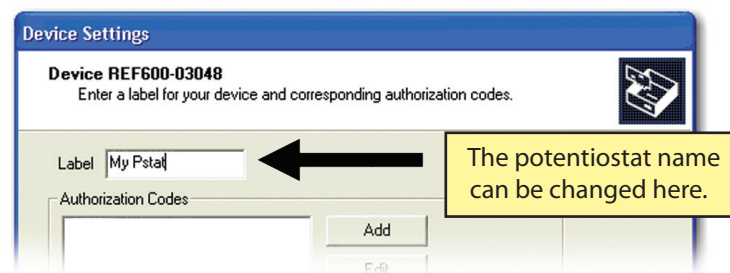


- Follow prompts through the rest of the installation process.
- Restart your computer after installation is complete.

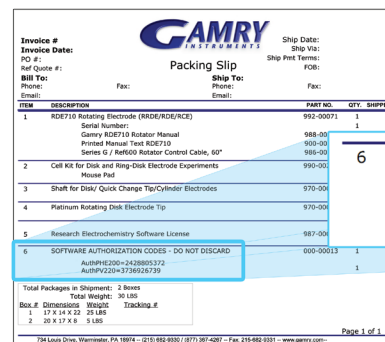
**3** Plug in the potentiostat's power cord. Plug in the USB cable. Switch on the power switch.



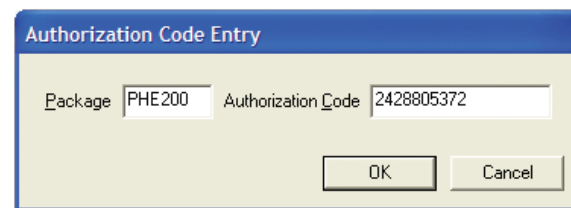
**4** Microsoft Windows will detect your instrument, and a 'Found New Hardware' prompt will appear. Select 'Install Software Automatically' and continue until the 'Device Settings' window appears.



**5** Locate your Authorization Codes printed on your packing slip.



**6** On the 'Device Settings' window, click 'Add' and enter the package name and 10-Digit Authorization code for each software license. Click 'Finish' to complete the installation.



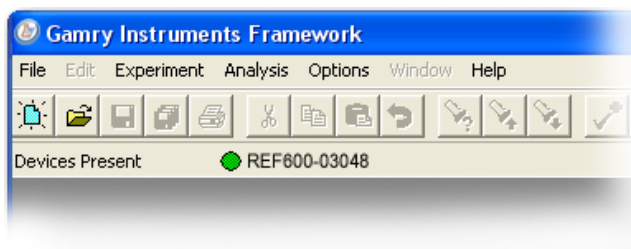
\* Repeat steps 3-6 to install additional potentiostats.



7

When setup is complete, double-click the Gamry Framework icon.

Your potentiostat should be listed next to 'Devices Present'.



8

Follow the steps in the Quick-Start Calibration Guide: USB Potentiostat to calibrate your potentiostat.

## WHAT DOES GAMRY SOFTWARE DO?



### **Gamry Framework™**

Controls your Gamry Potentiostat for advanced and flexible data acquisition. Select from standardized experiments that are grouped by research type or use the Sequence Wizard to build complex automated experiments.



### **Echem Analyst™**

Quick and easy Data Analysis. Open your data files with Echem Analyst to perform specialized analysis algorithms and produce high quality plots. Plots can be customized, overlaid, and scaled, or data can be exported for use in other plotting programs.



### **My Gamry Data™**

The default data folder location for Gamry Framework data files. You will find a shortcut on your desktop after installation. The data folder location can be changed within Gamry Framework by selecting: Options > Path.