

About This Manual

Power Source Database User's Guide introduces the new look of the database **software** and provides the basic procedures to begin your search. In this manual, the user will learn the basic features of the **Power Source Database** software, including the new user interface. Designed to apprise users of the fundamentals quickly and easily, this manual provides step-by-step procedures to start using the most powerful **Power Source Database** available in the new guide revised October 2011.

Chapter 1: Registration

First step for using the database is to register for a subscription.

Fill in the registration form located at:

<http://www.batteriesdatabase.com/App/Common/Registration.aspx>

Send us the registration form by selecting the "Register" icon.

Within 48 hours we will send you a proforma invoice for the subscription fee for the database.

After full payment transfer has been made, we will provide you with a username and password which will allow you to use the database for a year.

Batteries Database

Select Your Option

- Home
- About
- Management
- Application Information
- View Demo
- Vendors
- Contact Us
- Register

Registration

* indicates required field.

Login information

Username

Password Confirm

User Type

User/Company information

First Name

Last Name

Company

Position

E-Mail

Phone Number

Fax Number

Company website

Address

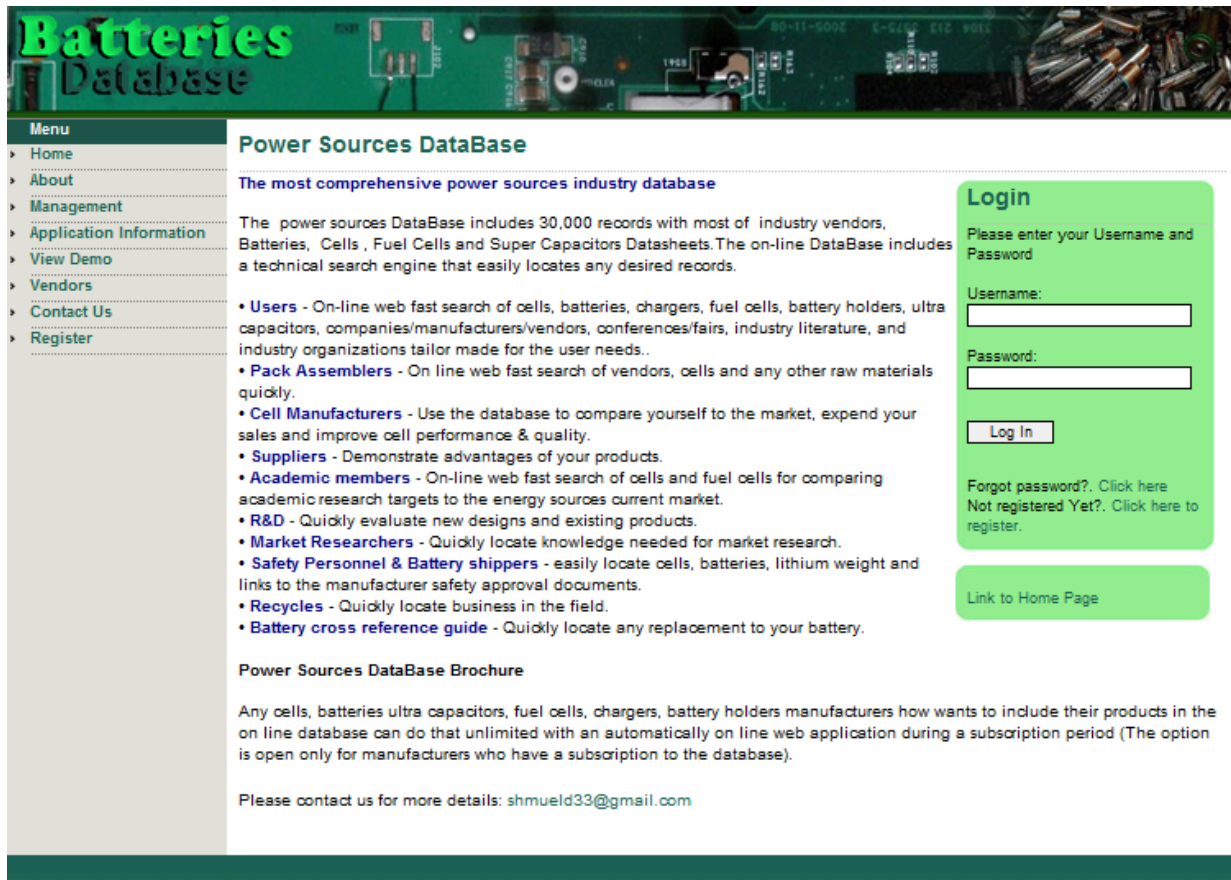
City

Country

Post Code/ Zip Code

Chapter 2: Getting Started with the Power Sources Database

Enter the database by typing your username and password at the database login page and select the log in icon: <http://www.batteriesdatabase.com/App/Default.aspx>



Batteries Database

Menu

- Home
- About
- Management
- Application Information
- View Demo
- Vendors
- Contact Us
- Register

Power Sources DataBase

The most comprehensive power sources industry database

The power sources DataBase includes 30,000 records with most of industry vendors, Batteries, Cells, Fuel Cells and Super Capacitors Datasheets. The on-line DataBase includes a technical search engine that easily locates any desired records.

- **Users** - On-line web fast search of cells, batteries, chargers, fuel cells, battery holders, ultra capacitors, companies/manufacturers/vendors, conferences/fairs, industry literature, and industry organizations tailor made for the user needs.
- **Pack Assemblers** - On line web fast search of vendors, cells and any other raw materials quickly.
- **Cell Manufacturers** - Use the database to compare yourself to the market, expand your sales and improve cell performance & quality.
- **Suppliers** - Demonstrate advantages of your products.
- **Academic members** - On-line web fast search of cells and fuel cells for comparing academic research targets to the energy sources current market.
- **R&D** - Quickly evaluate new designs and existing products.
- **Market Researchers** - Quickly locate knowledge needed for market research.
- **Safety Personnel & Battery shippers** - easily locate cells, batteries, lithium weight and links to the manufacturer safety approval documents.
- **Recycles** - Quickly locate business in the field.
- **Battery cross reference guide** - Quickly locate any replacement to your battery.

Power Sources DataBase Brochure

Any cells, batteries ultra capacitors, fuel cells, chargers, battery holders manufacturers how wants to include their products in the on line database can do that unlimited with an automatically on line web application during a subscription period (The option is open only for manufacturers who have a subscription to the database).

Please contact us for more details: shmueld33@gmail.com

Login

Please enter your Username and Password

Username:

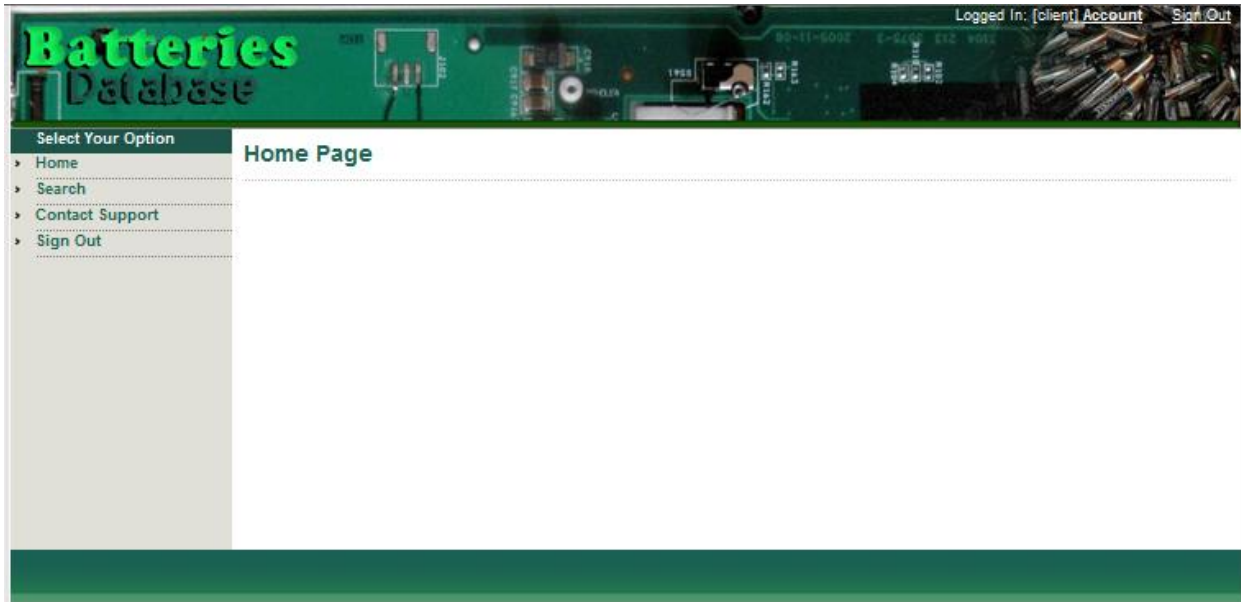
Password:

Forgot password?. [Click here](#)
Not registered Yet?. [Click here to register.](#)

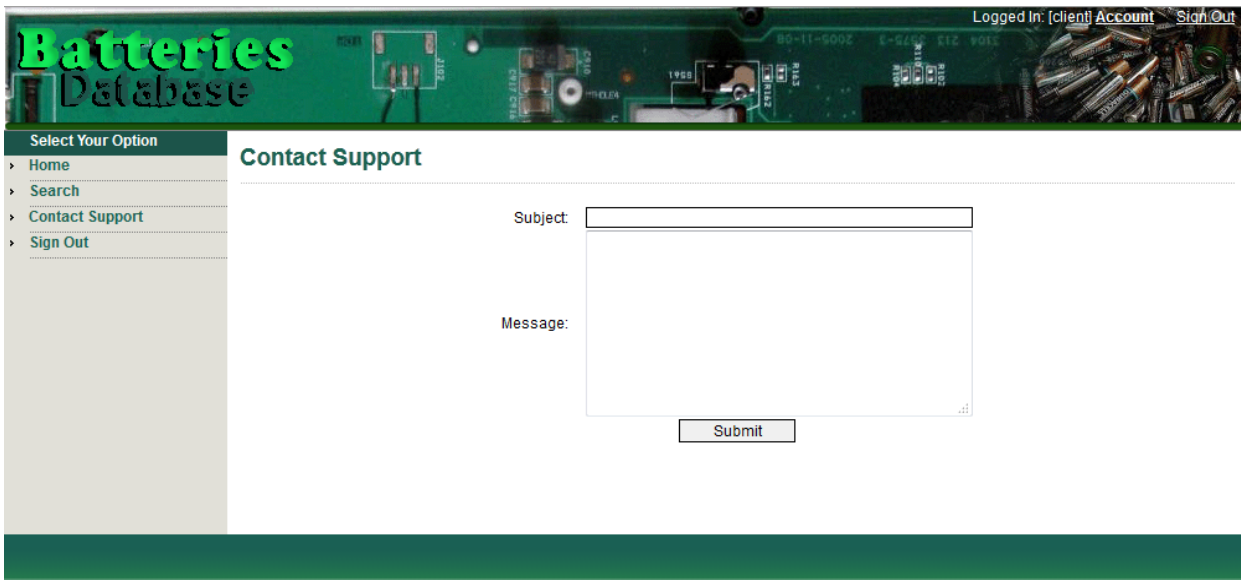
[Link to Home Page](#)

You will enter the database from the Home screen:

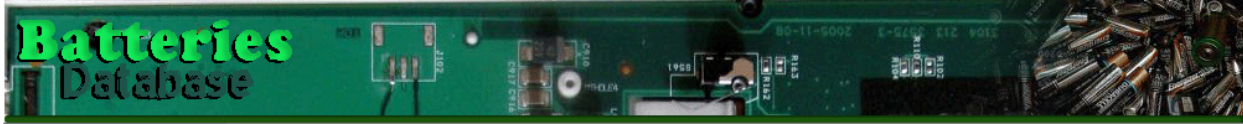
Home – still under construction.



Contact Support – To send us a request for support, please fill in the subject and the message fields and select the "Submit" icon for sending us your support request. We will respond within 24 hours.



Sign Out – Select the "Sign Out" icon to sign out from the software and return to the database Menu page.



Batteries Database

Menu

- Home
- About
- Management
- Application Information
- View Demo
- Vendors
- Contact Us
- Register

Power Sources DataBase

The most comprehensive power sources industry database

The power sources DataBase includes 30,000 records with most of industry vendors, Batteries, Cells, Fuel Cells and Super Capacitors Datasheets. The on-line DataBase includes a technical search engine that easily locates any desired records.

- Users** - On-line web fast search of cells, batteries, chargers, fuel cells, battery holders, ultra capacitors, companies/manufacturers/vendors, conferences/fairs, industry literature, and industry organizations tailor made for the user needs..
- Pack Assemblers** - On line web fast search of vendors, cells and any other raw materials quickly.
- Cell Manufacturers** - Use the database to compare yourself to the market, expend your sales and improve cell performance & quality.
- Suppliers** - Demonstrate advantages of your products.
- Academic members** - On-line web fast search of cells and fuel cells for comparing academic research targets to the energy sources current market.
- R&D** - Quickly evaluate new designs and existing products.
- Market Researchers** - Quickly locate knowledge needed for market research.
- Safety Personnel & Battery shippers** - easily locate cells, batteries, lithium weight and links to the manufacturer safety approval documents.
- Recycles** - Quickly locate business in the field.
- Battery cross reference guide** - Quickly locate any replacement to your battery.

Power Sources DataBase Brochure

Any cells, batteries ultra capacitors, fuel cells, chargers, battery holders manufacturers how wants to include their products in the on line database can do that unlimited with an automatically on line web application during a subscription period (The option is open only for manufacturers who have a subscription to the database).

Please contact us for more details: shmueld33@gmail.com

Login

Please enter your Username and Password

Username:

Password:

Forgot password? [Click here](#)
Not registered Yet? [Click here to register.](#)

Search – Select the "Search" icon to enter the main database search screen.

Batteries Database Logged In: [client] Account Sign Out

Select Your Option

- > Home
- > Search
- > Contact Support
- > Sign Out

Search Select

Battery Holders	Browse(461)	Search
Chargers	Browse(1619)	Search
Companies	Browse(2277)	Search
Fuel Cells	Browse(120)	Search
Industry Events	Browse(597)	Search
Industry Literature	Browse(110)	Search
Industry Organizations	Browse(119)	Search
Military Batteries	Browse(373)	Search
Primary Batteries	Browse(58)	Search
Primary Cells	Browse(4355)	Search
Rechargeable Batteries	Browse(135)	Search
Rechargeable Cells	Browse(17723)	Search
Ultra Capacitors	Browse(1161)	Search

On the left is a list of 13 database modules.

Module 1: Battery Holders

Includes 461 standard battery holders PDF data sheets and links to the web site manufacturer's data sheets.

Module 2: Chargers

Includes 1,691 standard battery chargers PDF data sheets and links to the web site manufacturer's data sheets.

Module 3: Companies

Includes 2,277 industry companies classified according to address details, manufactured products, battery chemistries and fuel cell types.

Module 4: Fuel Cells

Includes 120 standard fuel cells PDF data sheets and links to the web site manufacturer's data sheets.

Module 5: Industry Events

Includes 597 future and past industry conferences/fairs/events with a PDF page about the event and links to the event web site.

Module 6: Industry Literature

Includes 110 web links to industry magazines and portals.

Module 7: Industry Organizations

Includes 119 web links to industry organizations.

Module 8: Military Batteries

Includes 373 military batteries PDF data sheets and links to the web site manufacturer's data sheets.

Module 9: Primary Batteries

Includes 58 standard primary batteries PDF data sheets and links to the web site manufacturer's data sheets. (This module is expected to be expanded to 1000 batteries within a year).

Module 10: Primary Cells

Includes 4,355 primary cells PDF data sheets and links to the web site manufacturer's data sheets.

Module 11: Rechargeable Batteries

Includes 135 standard primary batteries PDF data sheets and links to the web site manufacturer's data sheets. (This module is expected to be expanded to 1000 batteries within a year).

Module 12: Rechargeable Cells

Includes 17,723 primary cells PDF data sheets and links to the web site manufacturer's data sheets.

Module 13: Ultra Capacitors

Includes 1,161 ultra capacitors PDF data sheets and links to the web site manufacturer's data sheets.

Chapter 3: How to Use the "Browse" Option

The "Browse" option is the same in all modules.

Select the Primary Cells "Browse" icon and receive the primary cells table view.

Primary Cells 4355 Records Found | View All Records | Back To Product List | [Print] Loaded Results in 78ms

CELL CODE	Company Name	Chemistry	Model #	Part #	Cell Status	Cell Shape	Internal Construction	Common Size	Case Polarity	Low Magnetic Signature	Seal	Case Material	Self Discharge (Per year %)	Shelf Life (Yr)	Max Impedance (k Ω Hz AC (m Ω m))	Mounting	Maximum Capacity (AH)
Select 6327	Saft	Lithium thionyl chloride - P	LSH	LSH14	Active	Cylindrical	Spiral	C	-	No	Hermetic - weld with glass to metal seal	Stain less steel	0	10	0	Flat	5.8
Select 6328	Saft	Lithium thionyl chloride - P	LSH	LSH20	Active	Cylindrical	Spiral	D	-	No	Hermetic - weld with glass to metal seal	Stain less steel	0	10	0	Flat	13
Select 6329	Saft	Lithium thionyl chloride - P	LS	LS14250	Active	Cylindrical	Bobbin	1/2AA	-	No	Hermetic - weld with glass to metal seal	Stain less steel	0	10	0	Flat	1.2
Select 6330	Saft	Lithium thionyl chloride - P	LS	LS14500	Active	Cylindrical	Bobbin	AA	-	No	Hermetic - weld with glass to metal seal	Stain less steel	0	10	0	Flat	2.6
Select 6331	Saft	Lithium thionyl chloride - P	LS	LS26500	Active	Cylindrical	Bobbin	C	-	No	Hermetic - weld with glass to metal seal	Stain less steel	0	10	0	Flat	7.7
Select 6332	Saft	Lithium thionyl chloride - P	LS	LS33600	Active	Cylindrical	Bobbin	D	-	No	Hermetic - weld with glass to metal seal	Stain less steel	0	10	0	Flat	17
Select 6333	Saft	Lithium sulfur dioxide - P	LO	LO35SX	Active	Cylindrical	Spiral	2/3C	-	No	Hermetic - weld with glass to metal seal	Stain less steel	0	10	0	Flat	2.2
Select 6334	Saft	Lithium sulfur dioxide - P	LO	LO29SHX	Active	Cylindrical	Spiral	C	-	No	Hermetic - weld with glass to metal seal	Stain less steel	0	10	0	Flat	3.75
Select 6335	Saft	Lithium sulfur dioxide - P	LO	LO40SHX	Obsolete	Cylindrical	Spiral	2/3 THIN D	-	No	Hermetic - weld with glass to metal seal	Stain less steel	0	10	0	Flat	3.5
Select 6336	Saft	Lithium sulfur dioxide - P	LO	LO30SHX	Active	Cylindrical	Spiral	Thin D	-	No	Hermetic - weld with glass to metal seal	Stain less steel	0	10	0	Flat	5.75
Select 6337	Saft	Lithium sulfur dioxide - P	LO	LO26SX	Active	Cylindrical	Spiral	D	-	No	Hermetic - weld with glass to metal seal	Stain less steel	0	10	0	Flat	7.75
Select 6338	Saft	Lithium sulfur dioxide - P	LO	LO26SHX	Active	Cylindrical	Spiral	D	-	No	Hermetic - weld with glass to metal seal	Stain less steel	0	10	0	Flat	7.5
Select 6339	Saft	Lithium sulfur dioxide - P	LO	LO25SX	Active	Cylindrical	Spiral	Fat D	-	No	Hermetic - weld with glass to metal seal	Stain less steel	0	10	0	Flat	8
Select 6340	Saft	Lithium sulfur dioxide - P	LO	LO39SHX	Active	Cylindrical	Spiral	F	-	No	Hermetic - weld with glass to metal seal	Stain less steel	0	10	0	Flat	11.5
Select 6341	Saft	Lithium sulfur dioxide - P	LO	LO52SX	Obsolete	Cylindrical	Spiral	DD	-	No	Hermetic - weld with glass to metal seal	Stain less steel	0	10	0	Flat	16
Select 6342	Eagle Picher Technologies	Lithium thionyl chloride - P	LTC	LTC30	Obsolete	Prismatic	Sandwich	Non common	+	No	Hermetic - weld with glass to metal seal	Stain less steel	2	10	0	Flat	3
Select 6343	Saft	Lithium thionyl chloride - P	LSH	LSH20HTC	Active	Cylindrical	Spiral	D	-	No	Hermetic - weld with glass to metal seal	Stain less steel	0	10	0	Flat	12
Select 6344	Saft	Lithium sulfur dioxide - P	LO	LO34SX	Active	Cylindrical	Spiral	1/3C	-	No	Hermetic - weld with glass to metal seal	Stain less steel	0	10	0	Flat	0.85
Select 6345	Electrochem	Lithium bromine chloride complex - P	BCX85	3B6050	Active	Button	Wafer	Non common	+	No	Hermetic - weld with glass to metal seal	Stain less steel	3	10	0	Pins	1
Select 6346	Electrochem	Lithium sulfuryl chloride - P	CSC93	3B6045	Active	Button	Wafer	Non common	+	No	Hermetic - weld with glass to metal seal	Stain less steel	3	10	0	Flat	1

This page includes a table with 20 first records inside the primary cells module. Right scroll to see all the table columns. Select page numbers on the lower menu for scrolling between records.

Select the "View All Records" option in the upper Menu to see all records in one table.

Select the "Back to Product List" option in the upper menu for returning to the main database search operating screen.

Select the "Print" option in the upper menu for printing the table.

Selecting a column header will sort the records from A-Z and second select will sort the records from Z-A and vice versa.

Select a record inside the table by clicking the select in the left side of the record – that will transfer you to the record page view.

Primary Cells Go Back To Previous

Distributions		Voltages				Capacity	
Company Name	Saft	Open Circuit Voltage (V)	3.857	Nominal Voltage (V)	3.6	Maximum Capacity (Ah)	5.8
Chemistry	Lithium thionyl chloride - P	Cut Off Voltage (V)	2	Currents		Max Energy (Wh)	000020.888
Model #	LSH	Standard Discharge Current (A)	0.21	Maximum Constant Discharge Current (A)	1.3	Volume (CC)	000028.7453
Cell Status	Active	Maximum Pulse Discharge Current (A)	2	Environmental		Volume Energy Density (Wh/L)	000016.8960
General Information		Min Discharge Temperature (C)	-65	Max Discharge Temperature (C)	85	Volume Power Density (W/L)	0000174.8843
Cell Shape	Cylindrical	Min Storage Temperature (C)	0	Max Storage Temperature (C)	35	Volume Capacity Density (Ah/L)	0000119.8908
Common Size	C	Max Discharge Humidity (%)	0	Max Discharge Humidity (%)	100	Pulse C-Rate	000.3
Case Polarity	-	Height (mm)	50.4	Diameter (mm)	20	Cell Weight (g)	81
Low Magnetic Signature	No	Width (mm)	0	Length (mm)	0	Safety Components	Lithium Weight (g)
Seal	Hermetic - weld with glass to metal seal	Case Material	Stain less steel	Standardize		Internal Vent	Yes
Internal Construction	Spiral	Internal Fuse	No	Internal Fuse Value (A)	5	Internal Blocking Diode	Yes
Case Material	Stain less steel	Shut Down Separator	Yes	Transportation Status	Class 9	Shut Down Separator	Yes
Self Discharge Per Year (%)	0	Pass UN Tests	Yes	Comments		Comments	
Max Impedance (k Ω Hz AC (m Ω m))	0	Rate Compliance	Yes				
Mounting	Flat	UL Recognition	Yes				
Links	Click here to View						
Primary Cell PDF Link	Click here to View						
Primary Cell Web Site Link	Click here to View						

Select "Go Back to Previous Page" for returning to the record table view.

Scroll right to the end of the table view:

Weight Power Density (W/KG)	Volume Power Density (W/L)	Weight Capacity Density (AH/KG)	Volume Capacity Density (AH/L)	Constant C-Rate	Pulse C-Rate	Cell Weight (gr)	Lithium Weight (gr)	Internal Vent	Internal Blocking Diode	Internal Parallel Diode	Internal Fuse	Internal Fuse Value (A)	Shut Down Separator	Pass UN Tests	Transportation Status	RoHS Compliance	UL Recognition	Primary Cell PDF Link	Primary Cell Web Site Link
91.7647	174.9843	113.7255	216.8608	0.2	0.3	51	1.7	Yes	No	No	Yes	5	Unknown	Yes	Class 9	Yes	Yes	View PDF	View Link
64.8	120.1245	130	240.9906	0.1	0.3	100	3.8	Yes	No	No	Yes	5	Unknown	Yes	Class 9	Yes	Yes	View PDF	View Link
14.1573	30.1465	134.8315	287.1095	0	0.1	8.9	0.3	No	No	No	No	0	Unknown	Yes	Non Restricted	Yes	Yes	View PDF	View Link
10.7784	21.5332	155.6886	311.0353	0	0.1	16.7	0.7	No	No	No	No	0	No	Yes	Non Restricted	Yes	Yes	View PDF	View Link
11.25	20.7251	160.4167	295.5241	0	0	48	2	Yes	No	No	Yes	2.2	Unknown	Yes	Class 9	Yes	Yes	View PDF	View Link
10	17.072	188.8889	322.4704	0	0	90	4.5	Yes	No	No	Yes	2.2	No	Yes	Class 9	Yes	Yes	View PDF	View Link
186.6667	296.2268	73.3333	116.3748	0.9	2.3	30	0.8	Yes	No	No	No	0	Unknown	Yes	Non Restricted	Yes	Yes	View PDF	View Link
175	269.9715	93.75	144.6276	0.7	1.6	40	1.2	Yes	No	No	No	0	Unknown	Yes	Class 9	Yes	Yes	View PDF	View Link
140	206.7474	87.5	129.2171	0.6	2.9	40	1.1	Yes	No	No	No	0	Unknown	Yes	Class 9	Yes	No	View PDF	View Link
133.3333	210.9584	91.2698	144.406	0.5	1.7	63	1.9	Yes	No	No	No	0	Unknown	Yes	Class 9	Yes	Yes	View PDF	View Link
82.3529	128.5646	91.1765	142.3394	0.3	0.6	85	2.4	Yes	No	No	No	0	Unknown	Yes	Class 9	Yes	Yes	View PDF	View Link
131.7647	205.7034	88.2353	137.7478	0.5	2	85	2.3	Yes	No	No	No	0	Unknown	Yes	Class 9	Yes	Yes	View PDF	View Link
72.9167	113.623	83.3333	129.8548	0.3	1.3	96	2.6	Yes	No	No	No	0	Unknown	Yes	Class 9	Yes	Yes	View PDF	View Link
67.2	104.8401	92	143.5311	0.3	5.2	125	3.9	Yes	No	No	No	0	Unknown	Yes	Class 9	Yes	Yes	View PDF	View Link
106.7485	168.8348	98.1595	155.2504	0.4	1.3	163	0	Yes	No	No	No	0	Unknown	Yes	Class 9	Yes	No	View PDF	View Link
7.6825	20.1774	128.041	336.2893	0	0	23.43	0.67	No	No	No	No	0	No	Yes	Non Restricted	Yes	No	View PDF	View Link
36	66.7359	120	222.4528	0.1	0.3	100	4	Yes	No	No	Yes	5	Unknown	Yes	Class 9	Yes	No	View PDF	View Link
161.1111	271.2894	47.7778	80.4513	1.2	2.3	18	0.3	Yes	No	No	No	0	Unknown	Yes	Non Restricted	Yes	Yes	View PDF	View Link
2.8462	9.5876	76.9231	259.1242	0	0	13	0.4	No	No	No	No	0	No	Yes	Non Restricted	Yes	Yes	View PDF	View Link
2.9231	9.8726	76.9231	259.8061	0	0	13	0.3	No	No	No	No	0	No	Yes	Non Restricted	Yes	Yes	View PDF	View Link

Selecting the “View PDF” of a specific cell record will transfer you to the cell PDF data sheet.

Primary lithium battery LSH 14

3.6 V Primary lithium-thionyl chloride (Li-SOCl₂)
High power
C-size spiral cell



Benefits

- High voltage response, stable during most of the lifetime of the application
- High drain/pulse capability
- Wide operating temperature range (-60°C/+85°C)
- Easy integration in compact system
- Low self-discharge rate (less than 3% after 1 year of storage at +20°C)

Key features

- Stainless steel container
- Hermetic glass-to-metal sealing
- Built-in safety vent
- Finish with 5 A fuse
- Non-flammable electrolyte
- Lindswaters Laboratories (LIL) Component Recognition (File Number MH 12609)
- Compliant with IEC 60086-4
- Restricted for transport (Class 9)

Main applications

- Radiocommunication and other military applications
- Alarms and security systems
- Beacons and emergency location transmitters
- GPS
- Metering systems
- Sonobuoys
- Automotive telematics
- Pipeline inspection

Cell size reference UMG - R14 - C

Electrical characteristics

<i>(typical values relative to cells stored for one year or less at +30°C max.)</i>	
Nominal capacity (at 15 mA + 20°C; 2.0 V cut-off. The capacity restored by the cell varies according to current drain, temperature and cut-off)	5.8 Ah
Open circuit voltage (at +20°C)	3.67 V
Nominal voltage (at 1 mA + 20°C)	3.6 V

Pulse capability: Typically up to 3000 mA (3000 mA/0.1 second pulses, drained every 2 min at +20°C from undischarged cells with 10 µA base current, yield voltage readings above 3.0 V. The readings may vary according to the pulse characteristics, the temperature, and the cell's previous history. Firing the cell with a capacitor may be recommended in severe conditions. Consult Saft.)

Maximum recommended continuous current: 1300 mA (to maintain cell heating within safe limits. Battery packs may imply lower level of maximum current and may request specific thermal protection. Consult Saft.)

Storage (recommended) +30°C (+85°F) max (for more severe conditions, consult Saft.)

Operating temperature range -60°C/+85°C (Operation at extreme T may lead to reduced capacity and lower voltage readings at the beginning of pulses. Consult Saft.)

Physical characteristics

Diameter (max) 26.0 mm (1.02 in)

Height (max) 50.4 mm (1.98 in)

Typical weight 51 g (1.8 oz)

Li metal content approx. 1.7 g

Available termination suffix

CN, CNR	metal tabs
3P, 3 PF, PP	metal pins
DA, DA(X)	axial leads
FL	flying leads ...etc.

NATO stock number
6135 12 306 4125



Selecting “View Link” of a specific cell record will transfer you to the cell web link data sheet.

Chapter 4: How to Use the Search Engine

Search logic is the same in all modules.

Select the search option of the primary cells and receive the search engine of the primary cell module:

Primary Cells

Back To Product List Reset Filters **Jump to Search Results** Proceed to Column Selection

Definitions		Voltages		Capacity	
Company Name	=	Open Circuit Voltage (V)	=	Maximum Capacity (Ah)	=
Chemistry	=	Nominal Voltage (V)	=	Energy Calculations	=
Model #	=	Cut Off Voltage (V)	=	Max Energy (Wh)	=
Cell Status	=	Standard Discharge Current (A)	=	Volume (CC)	=
General Information		Maximum Constant Discharge Current (A)	=	Volume Energy Density (Wh/L)	=
Cell Shape	=	Maximum Pulse Discharge Current (A)	=	Volume Power Density (Wh/kg)	=
Common Size	=	Min Discharge Temperature (C)	=	Volume Power Density (Wh/L)	=
Case Polarity	=	Min Storage Temperature (C)	=	Weight Capacity Density (Wh/kg)	=
Seal	=	Max Discharge Humidity (%)	=	Volume Capacity Density (Wh/L)	=
Case Material	=	High Discharge Temperature (C)	=	Pulse C-Rate	=
Self Discharge Per year (%)	=	Low Discharge Temperature (C)	=	Volume/Weight	=
Max Impedance 1KHz AC (mOhm)	=	Min Discharge Humidity (%)	=	Cell Weight (g)	=
Mounting	=	Height (mm)	=	Safety Components	=
Primary Cell Web Site Link	=	Width (mm)	=	Internal Vent	=
		Depth (mm)	=	Internal Parallel Diode	=
		Standards	=	Internal Fuse	=
		RoHS Compliance	=	Internal Fuse Value (A)	=
		UN 38.3	=	Shut Down Separator	=
		UN 38.3	=	Transportation Status	=
		UN 38.3	=	Pass UN Tests	=

The search engine includes Alfa-Beta fields such as company name field, numeric fields like open circuit voltage (v) field and calculation fields such as the Volume Energy Density (Wh/l) field.

You can select any search conditions on any field to receive the search records that meet these conditions.

You can use: =, =!, start with, is null, is not null, not like, like conditions for Alfa-Beta fields. =, =!, >, >=, <, <=, <> conditions for numerical or calculative fields.

For instance: typing =“Saft” in the company name field will retrieve all records of cells manufactured by Saft Batteries.

Primary Cells

Definitions	
Company Name	= Saft
Chemistry	=
Model #	=
Cell Status	=
General Information	
Cell Shape	=
Common Size	=
Case Polarity	=
Seal	=
Case Material	=
Self Discharge Per year (%)	=
Max Impedance 1KHz AC (mOhm)	=
Mounting	=
Links	
Primary Cell Web Site Link	=

Select the “Jump to Search Results” icon in the upper menu and receive 74 cells records manufactured by Saft.

CELL CODE	Company Name	Chemistry	Model #	Part #	Cell Status	Cell Shape	Internal Construction	Common Size	Case Polarity	Low Magnetic Signature	Seal	Case Material	Self Discharge Per year (%)	Shelf Life (Yr)	Max Impedance 1KHz AC (mOhm)	Mounting	Maximum Capacity (AH)	Open Circuit Voltage (V)	Nominal Voltage (V)	Cut Off Voltage (V)	Standard Discharge Current (A)	Maximum Constant Discharge Current (A)	Maximum Pulse Discharge Current (A)	Min Discharge Temperature (C)	Max Discharge Temperature (C)	Min Storage Temperature (C)	Max Storage Temperature (C)	Min Discharge Humidity (%)	Max Discharge Humidity (%)	Height (mm)	Diameter (mm)	Width (mm)
Select 6327	Saft	Lithium thionyl chloride -P	LSH	LSH14	Active	Cylindrical	Spiral	C	-	No	Hermetic - weld with glass to metal seal	Stainless steel	0	10	0	Flat	5.8	3.67	3.6	2	0.01	1.3	2	-60	85	0	30	0	100	50.4	26	0
Select 6328	Saft	Lithium thionyl chloride -P	LSH	LSH20	Active	Cylindrical	Spiral	D	-	No	Hermetic - weld with glass to metal seal	Stainless steel	0	10	0	Flat	13	3.67	3.6	2	0.015	1.8	4	-60	85	0	30	0	100	61.6	33.4	0
Select 6329	Saft	Lithium thionyl chloride -P	LS	LS14250	Active	Cylindrical	Bobbin	1/2AA	-	No	Hermetic - weld with glass to metal seal	Stainless steel	0	10	0	Flat	1.2	3.67	3.6	2	0.001	0.035	0.1	-60	85	0	30	0	100	25.15	14.55	0
Select 6330	Saft	Lithium thionyl chloride -P	LS	LS14500	Active	Cylindrical	Bobbin	AA	-	No	Hermetic - weld with glass to metal seal	Stainless steel	0	10	0	Flat	2.6	3.67	3.6	2	0.0002	0.05	0.25	-60	85	0	30	0	100	50.3	14.55	0
Select 6331	Saft	Lithium thionyl chloride -P	LS	LS25500	Active	Cylindrical	Bobbin	C	-	No	Hermetic - weld with glass to metal seal	Stainless steel	0	10	0	Flat	7.7	3.67	3.6	2	0.004	0.15	0.3	-60	85	0	30	0	100	49.1	26	0

Adding additional conditions to the current condition of =“Saft” such as Common Size =“AA” will bring all cells records manufactured by Saft with AA cell size.

Primary Cells

Definitions

Company Name =

Chemistry =

Model # =

Cell Status =

General Information

Cell Shape =

Common Size =

Case Polarity =

Seal =

Case Material =

Self Discharge Per year (%) =

Shelf Life (Yr) =

Max Impedance 1KHz AC (mOhm) =

Mounting =

Links

Primary Cell Web Site Link =

Search Results include only 9 cell records of Saft AA cells.

CELL CODE	Company Name	Chemistry	Model #	Part #	Cell Status	Cell Shape	Internal Construction	Common Size	Case Polarity	Low Magnetic Signature	Seal	Case Material	Self Discharge Per year (%)	Shelf Life (Yr)	Max Impedance 1KHz AC (mOhm)	Mounting	Maximum Capacity (AH)	Open Circuit Voltage (V)	Nominal Voltage (V)	Cut Off Voltage (V)	Standard Discharge Current (A)	Maximum Constant Discharge Current (A)	Maximum Pulse Discharge Current (A)	Min Discharge Temperature (C)	Max Discharge Temperature (C)	Min Storage Temperature (C)	Max Storage Temperature (C)	Min Discharge Humidity (%)
Select 6330	Saft	Lithium thionyl chloride -P	LS	LS14500	Active	Cylindrical	Bobbin	AA	-	No	Hermetic - weld with glass to metal seal	Stainless steel	0	10	0	Flat	2.6	3.67	3.6	2	0.0002	0.05	0.25	-60	85	0	30	0
Select 6356	Saft	Lithium thionyl chloride -P	LS	LS14500C	Active	Cylindrical	Bobbin	AA	-	No	Hermetic - weld with glass to metal seal	Stainless steel	0	10	0	Flat	2.7	3.67	3.6	2	0.002	0.025	0.15	-60	70	0	30	0
Select 6743	Saft	Lithium sulfur dioxide -P	G	G062	Active	Cylindrical	Spiral	AA	-	No	Hermetic - weld with glass to metal seal	Stainless steel	0	10	0	Flat	0.95	3	2.8	1.8	0.08	0.5	0.8	-60	70	0	30	0
Select 6895	Saft	Lithium thionyl chloride -P	LSX	LSX14500	Active	Cylindrical	Spiral	AA	-	No	Hermetic - weld with glass to metal seal	Stainless steel	0	10	0	Flat	2.1	3.67	3.6	2	0.001	0.15	0.7	-60	85	0	30	0
Select 7046	Saft	Lithium thionyl chloride -P	LST	LST14500	Active	Cylindrical	Bobbin	AA	-	No	Hermetic - weld with glass to metal seal	Stainless steel	0	10	0	Flat	2.45	3.67	3.6	2	0.001	0.07	0.28	-60	85	0	30	0

Adding another condition to the current condition of =“Saft” and Common Size =“AA” such as Maximum Constant Discharge Current (A) “>1” will bring all cells records manufactured by Saft with AA cell size and maximum constant discharge current of >1A.

Primary Cells

Bac

Definitions				Voltages											
Company Name	=	▼	Saft	Open Circuit Voltage (V)	=	▼		Nominal Voltage (V)	=	▼					
Chemistry	=	▼		Cut Off Voltage (V)	=	▼									
Model #	=	▼													
Cell Status	=	▼													
General Information				Currents											
Cell Shape	=	▼		Internal Construction	=	▼		Standard Discharge Current (A)	=	▼		Maximum Constant Discharge Current (A)	>	▼	1
Common Size	=	▼	AA												
Case Polarity	=	▼		Low Magnetic Signature	=	▼									
Seal	=	▼													
Case Material	=	▼													
Self Discharge Per year (%)	=	▼		Shelf Life (Yr)	=	▼									
Max Impedence 1KHz AC (mOhm)	=	▼													
Mounting	=	▼													
Links				Environmental											
Primary Cell Web Site Link	=	▼		Min Discharge Temperature (C)	=	▼		Max Discharge Temperature (C)	=	▼					
				Min Storage Temperature (C)	=	▼		Max Storage Temperature (C)	=	▼					
				Min Discharge Humidity (%)	=	▼		Max Discharge Humidity (%)	=	▼					
				Dimensions											
				Height (mm)	=	▼		Diameter (mm)	=	▼					
				Width (mm)	=	▼		Length (mm)	=	▼					
				Standards											
				RoHS Compliance	=	▼		UL recognition	=	▼					

Search Results include 0 cell records as there are no cells that include these search condition parameters.

How to narrow the number of columns in the search results table to only the desired parameters?

On the upper menu of the search engine we can find the icon “Proceed to Column Selection”.

After selecting the search conditions select that icon.

You will receive a field selection page.

Primary Cells

Select All Deselect All

View Results

Definitions

Company Name

Cell Status

Chemistry

Model #

Part #

General Information

Cell Shape

Low Magnetic Signature

Shelf Life (Yr)

Internal Construction

Seal

Max Impedence 1KHz AC (mOhm)

Common Size

Case Material

Mounting

Case Polarity

Self Discharge Per year (%)

Capacity

Maximum Capacity (Ah)

Voltages

Open Circuit Voltage (V)

Nominal Voltage (V)

Cut Off Voltage (V)

Currents

Standard Discharge Current (A)

Maximum Constant Discharge Current (A)

Maximum Pulse Discharge Current (A)

Environmental

Min Discharge Temperature (C)

Min Discharge Humidity (%)

Max Discharge Temperature (C)

Max Discharge Humidity (%)

Min Storage Temperature (C)

Max Storage Temperature (C)

Dimensions

Height (mm)

Diameter (mm)

Width (mm)

Length (mm)

Energy Calculations

Max Energy (Wh)

Volume Energy Density (Wh/L)

Volume Capacity Density (Ah/L)

Max Power (W)

Weight Power Density (Wh/kg)

Constant C-Rate

Volume (CC)

Volume Power Density (Wh/L)

Pulse C-Rate

Weight Energy Density (Wh/kg)

Weight Capacity Density (Ah/kg)

Volume/Weight

Select the fields you would like to see in the results table – for instance company name and chemistry:

Primary Cells

Select All | Deselect All

Definitions

Company Name
 Cell Status

Chemistry

Model #

Part #

General Information

Cell Shape
 Low Magnetic Signature
 Shelf Life (Yr)

Internal Construction
 Seal
 Max Impedence 1KHz AC (mOhm)

Common Size
 Case Material
 Mounting

Case Polarity
 Self Discharge Per year (%)

Then select the “View Results” icon and receive a search results table with only the selected fields:

Primary Cells 74 Records Found | View All Records | Back To Search Page | [Print] Loaded Results in 53ms

	Primary Cells Index #	Company Name	Chemistry
Select	6327	Saft	Lithium thionyl chloride - P
Select	6328	Saft	Lithium thionyl chloride - P
Select	6329	Saft	Lithium thionyl chloride - P
Select	6330	Saft	Lithium thionyl chloride - P
Select	6331	Saft	Lithium thionyl chloride - P
Select	6332	Saft	Lithium thionyl chloride - P
Select	6333	Saft	Lithium sulfur dioxide - P
Select	6334	Saft	Lithium sulfur dioxide - P
Select	6335	Saft	Lithium sulfur dioxide - P
Select	6336	Saft	Lithium sulfur dioxide - P
Select	6337	Saft	Lithium sulfur dioxide - P
Select	6338	Saft	Lithium sulfur dioxide - P
Select	6339	Saft	Lithium sulfur dioxide - P
Select	6340	Saft	Lithium sulfur dioxide - P
Select	6341	Saft	Lithium sulfur dioxide - P
Select	6343	Saft	Lithium thionyl chloride - P
Select	6344	Saft	Lithium sulfur dioxide - P
Select	6366	Saft	Lithium thionyl chloride - P
Select	6426	Saft	Lithium sulfur dioxide - P
Select	6427	Saft	Lithium sulfur dioxide - P

With the same logic use the search engine for other modules and find the results you are looking for.

Shmuel De-Leon/CEO

Shmuel De-Leon Energy, Ltd.

Mazal Arie 10, Hod-Hasharon, Israel 45309

Tel/Fax: 972-77-5010792

Mobile: 972-52-8601517

E-Mail: shmueld33@gmail.com

Company web site: www.sdle.co.il

Power Sources DataBase web site: www.batteriesdatabase.com

Subscribe to our **Free [Weekly Newsletter for Batteries, Fuel Cells & the EV Industries](#)** Send mail to
shmueld33@gmail.com

Advertise your business in our weekly newsletter.

Send mail to Sigalit: sd@shmueldeleon.emea.microsoftonline.com