



Reference 600™ Potentiostat/Galvanostat/ZRA Quick-Start Guide

Installation Sequence is Important for Success

The Gamry potentiostats are plug-and-play devices. **Therefore, setup is easiest if you use the sequence below, installing the software before the hardware.** Setup of the Reference 600™ Potentiostat takes about 15 minutes.

- 1) **Install the Gamry Framework™ software on the PC.** In the process, you will also install the Gamry software packages you have purchased, such as DC105 DC Corrosion Techniques and EIS300 Electrochemical Impedance Spectroscopy Software. See page 5.
- 2) **Connect the Reference 600™ Potentiostat to the PC.** The operating system and Gamry software will recognize the Potentiostat automatically when you connect the USB and turn on the power to the instrument. See page 6.
- 3) **Complete software setup.** You will be prompted through this task when you restart the PC after installing the software and hardware. See page 8.
- 4) **Calibrate the potentiostat** using the Universal Dummy Cell 4 included in your Gamry shipment. See page 9.
- 5) **Do an optional test** using the Universal Dummy Cell 4. See page 13.

When the first four tasks have been completed, the Reference 600 potentiostat is ready to use.

You can run experiments and gather data with your Gamry software packages. **Instructions for running experiments** are on page 15.

This guide also includes **instructions for installing Gamry Echem Analyst™**. Gamry Echem Analyst makes it easy for you to view and manipulate experiment data.

Table of Contents

Installation Sequence is Important for Success	1
Table of Contents	1
Cautions	1
Computer and Power Requirements.....	2
Compatibility Between Software Versions and Potentiostats.....	2
Authorization Codes and Serial Numbers	2
Preparations	3
Installation of Gamry Framework, Echem Analyst and Software Packages	5
Connecting the Potentiostat	6
Calibration	9
Optional Test.....	13
Sources of More Information.....	14
Contacting Gamry	14
Reference Information.....	15
Procedure for Experiments	15
Grounding	15
Gamry File Types.....	15
General Instructions for Connecting Leads	15

Cautions

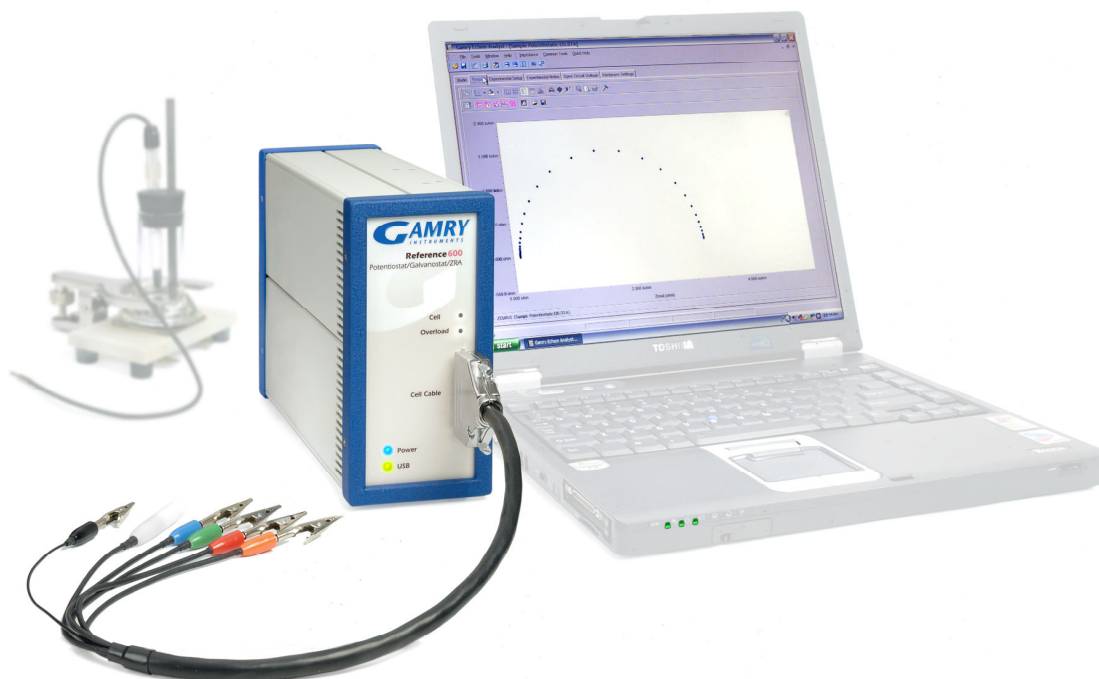


To avoid damaging electronic components of the Gamry Potentiostat or your PC, observe standard precautions against static damage.

Ground yourself before touching the inputs of your potentiostat.

Do not place fingers or objects into the fan openings on the rear of the instrument.

Do not open or modify the instrument in any fashion.



Installed Potentiostat with Cell Cable Attached

Computer and Power Requirements

You must connect the Gamry Potentiostat and install the Gamry Framework Version 5 software in the same computer. Your Reference 600 communicates using the Universal Serial Bus (USB). This PC must meet the requirements below.

Hardware

- A Windows-compatible personal computer
- One available USB port, revision 2.0 (preferred) or 1.1.
- Use the supplied certified USB interconnect cable with an A/B connector configuration.

Software

- Microsoft® Windows® 7, Windows® Vista, or Windows® XP SP2, either 32-bit or 64-bit versions
- At least 256 MB of memory (512 MB recommended) and 200 MB of available hard disk space

Power

- Use the supplied AC to DC power brick.

Compatibility Between Software Versions and Potentiostats

Gamry Version 5 software is compatible with all Gamry Potentiostats in the current generation.

- The Reference Family Potentiostats and Series G Potentiostats work with Gamry Version 5 software only.
- The PCI4/300™ and PCI4/750™ Potentiostats, and the FAS2™ Femtostat work with either Version 5 or Version 4 of the Gamry software.

Earlier potentiostat generations (PC4, FAS1, and PC3 Potentiostats) are not compatible with Version 5 Gamry software.

Authorization Codes and Serial Numbers

A sticker on the software license envelope contains the ten-digit Authorization Codes needed to install (or upgrade) the Gamry software.

Before you can use a Gamry software package, you must enter the Authorization Code to access the software. Authorization Codes are tied to the five-digit serial number of a specific potentiostat. The serial number of each Reference 600 Potentiostat is on a plate on the bottom of the unit.

If you bought more than one potentiostat (to be installed in more than one PC), each potentiostat will be packed in a separate carton with its own controller board and software Authorization Codes. Keep the contents of each carton together. Authorization Codes are valid only for the potentiostat shipped with the codes.

Preparations

The pictures below and on the following page identify the items in a typical shipment from Gamry.

Standard cables are pictured on page 4. If you ordered special cables, those may also be included in the potentiostat shipment.

To prepare to install your new Potentiostat:

- 1) Unpack the shipment carefully.

Do not discard the software license shipped with the CD. Authorization Codes that you will need to install the software are on the license sheet. (See *Authorization Codes and Serial Numbers* on page 2.)

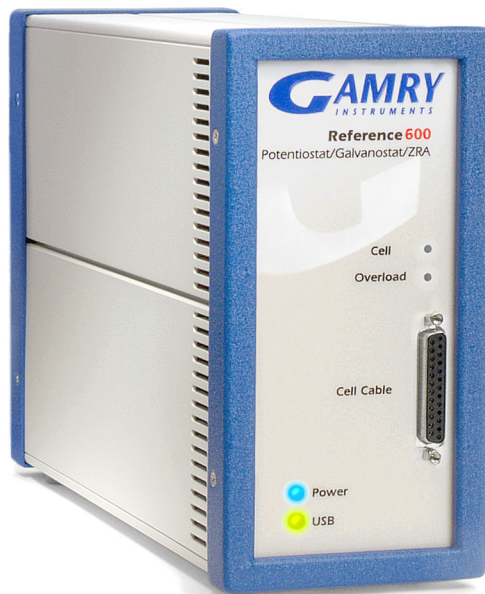
The potentiostat is shipped in a well-constructed foam container. Save this container. If you return the potentiostat to Gamry, put the instrument in this container for shipment.

- 2) *If custom scripts (standard scripts with modifications) are already on this PC, back up the scripts.*
- 3) *If a previous version of the Gamry Framework and associated software packages are on the PC, these will be uninstalled during the installation process.*

The contents of your "My Gamry Data" folder will not be removed when you upgrade. The data in the folder will not be overwritten when you install the new version of the Gamry software. Scripts in the "Scripts" folder will be overwritten if they have the same name as Version 5 scripts.

These script and data files may be relocated depending on the version you are upgrading from. If this is the case, the target of the desktop icons will also automatically update.

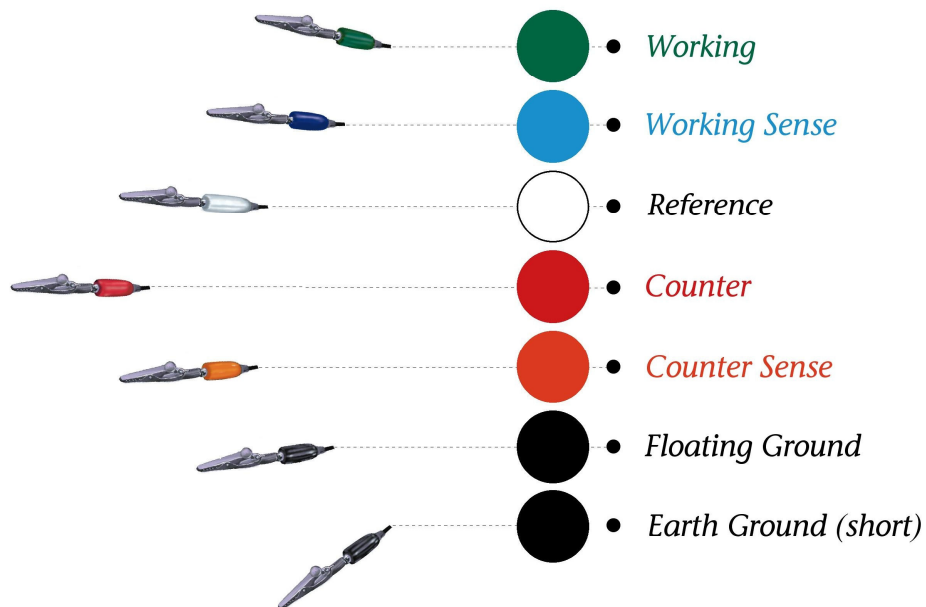
- 4) No tools are needed to install the potentiostat.



Reference 600 Potentiostat



Redefining Electrochemical Measurement
 215.682.9330 • Fax: 215.682.9331
 www.gamry.com • info@gamry.com



Mouse Pad with Color Coding for Leads



Cell Cable (black with color-coded clips on leads), CD, Universal Dummy Cell 4, Calibration Shield, USB Cable, Ground Cable, and Power Brick and associated AC line cord

Installation of Gamry Framework and Software Packages

Purpose of Gamry Framework Software

Gamry Framework software serves as the user interface for the Gamry software packages used to acquire experiment data. Examples of Gamry software packages are DC105 DC Corrosion Techniques and EIS300 Electrochemical Impedance Spectroscopy Software.

The Framework software is also used to calibrate the potentiostat. Therefore, you will **install the Framework software, even if you do not plan to use any of the Framework-based software packages**. If you bought only Gamry ESA410, VFP600, or Electrochemistry Toolkit software (which have their own graphical user interfaces), install the Framework software for calibration as well.

All the Gamry software is provided on a single CD.

Starting the Installation Process

To start the installation process:

- 1) Put the Gamry software CD into the drive. The Gamry setup screen will be displayed automatically, if auto-run is enabled.
- 2) If the Gamry software setup page is not displayed automatically, select **Start > Run**. In the Run window, type `D:\autorun` in the Open field, and then click on **OK**. (Substitute the letter of your CD drive for **D**.)
- 3) Click on the **Install Software** button to start the Installation Wizard. The Wizard will step you through the installation process. Most of the steps will be familiar; they are common to many other software installation procedures. The next subsections provide instructions for two Gamry-specific screens.

Selecting Software Packages to Install

When you get to the Select Features screen, check all the software packages (applications) that you want to install.

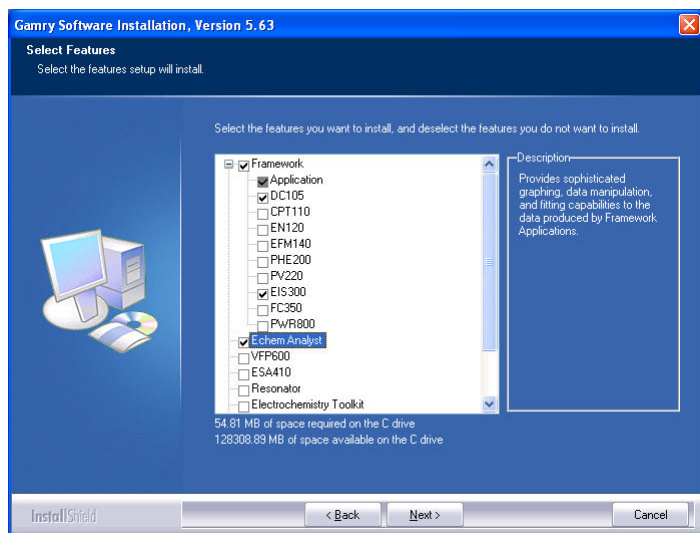
Installation of Gamry Echem Analyst is Recommended

Use Gamry Echem Analyst software to manipulate and interpret data gathered with experiments run with Gamry software packages (through the Gamry Framework user interface).

Echem Analyst can be installed on the same PC as the one containing the potentiostat or on a different PC. You are licensed to install Echem Analyst on multiple computers.

You can install software you have not yet purchased, as well as the software packages you did buy. After installation, you will be able to see the standard experiments available in all installed applications. However, you will not be able to use unlicensed applications. Your Gamry shipment included Authorization Codes for the software packages you bought. You will enter those codes later in the installation process.

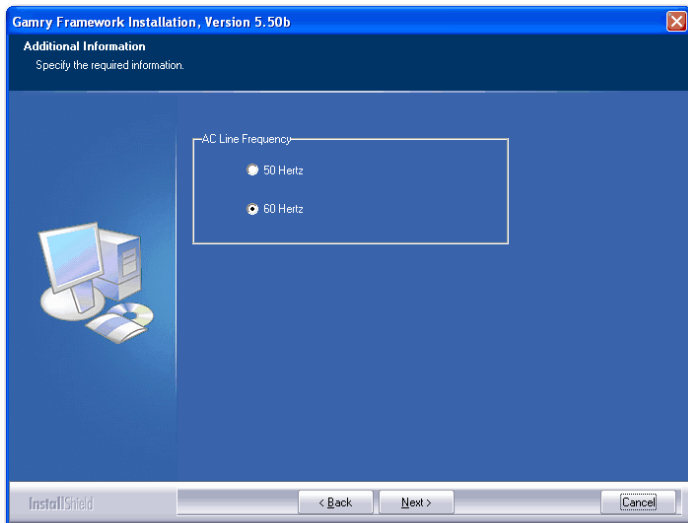
The installation routine assumes that at least one Gamry Potentiostat will be installed in this PC. Therefore, no potentiostats are listed on the Select Features screen. If you have ordered additional Gamry hardware that is on the list, scroll down and check the name of the hardware now.



Tip: If you like what you see and decide to buy more Gamry software packages, contact your Gamry sales representative.

When you buy an additional software package you will get a new Authorization Code. If you have already installed the software package, you will be able to enter the Authorization Code without repeating the installation process.

The tip on page 9 explains how to enter an additional Authorization Code.



Specifying Line Frequency

On the Additional Information screen, be sure to select the appropriate AC line frequency for your location. For example, in the United States, select 60 Hertz. In Europe, select 50 Hertz.

Completing Installation

To complete software installation and get ready for hardware installation:

- 1) Continue the installation process via the InstallShield Wizard.

Windows 7 Users will be prompted as the installer attempts to install device drivers and other necessary files. Check the box next to “Always trust software from “Gamry Instruments, Inc.”” in order to prevent further interruption/prompting.

- 2) Read the Readme file at the end of the installation process. In addition to release history information and notes on software fixes, this file contains any late-breaking news about the software that is not included in the other documentation.
- 3) Leave the Gamry CD in the drive.
- 4) Shut down Microsoft Windows. Do not restart the computer yet.

Next you will install the potentiostat in this PC.

Connecting the Potentiostat Preparations

To prepare to connect the Reference 600:

- 1) Locate an available USB Port.
- 2) Locate an available AC outlet.

Connect the USB Cable to the Computer

Plug the USB type A-male connector into an available female type-A connector on the computer as shown. The connector is unidirectional, and cannot be plugged in incorrectly.

Connect the USB Cable to the Reference 600

Plug the USB type B-male connector into the USB type B-female connector on the rear of the instrument. Again, this connector is unidirectional, and cannot be plugged in incorrectly.



Connect the Power Brick to an AC Power Source

The AC to DC power brick included with your system requires power from a 110V or 220V AC power outlet. The cable included with the system is suitable for use with 110V style power outlets. A converter or cable appropriate for 220V power outlets is not included with the shipment, but any IEC C13 line socket power cord can be used.

Connect the power cord to the power brick as shown, and then plug the other end into an available AC outlet.

Connect the Power Cord to the Rear of the Potentiostat

The instrument is powered by a DC power connector from the power brick included with the system.

To power the instrument, connect the male end of the power cable to the Power In female connector on the rear of the instrument.



Attach Cell Cable to Potentiostat

A cell cable is shipped with the potentiostat. One end of the cable has multiple color-coded cell leads ending in alligator clips. The other end of the cable has a twenty-five pin male D connector.

To install the cell cable:

- 1) Connect the cell cable to the twenty-five pin female D connector on the front of the Reference 600.
- 2) Use the screws on the cable connector to secure the connection. (Although screwdriver slots are provided, connecting the cable screws finger-tight is sufficient.)

Turn on the Potentiostat

After both the USB cable and the DC power cable have been attached to the rear of the potentiostat, turn on the instrument using the power toggle switch on the rear panel.

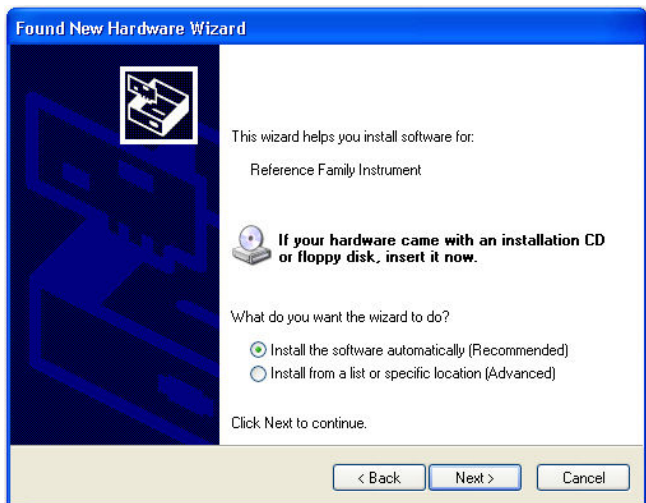
The blue power LED on the front of the instrument should flash 3 times, and then stay lit. The green USB LED should also light and stay lit light while the computer is powered.

If either of these LEDs do not stay lit, double check your connections as described. If you have made all of the connections properly and are still unable to resolve the problem, contact Gamry Instruments for assistance.

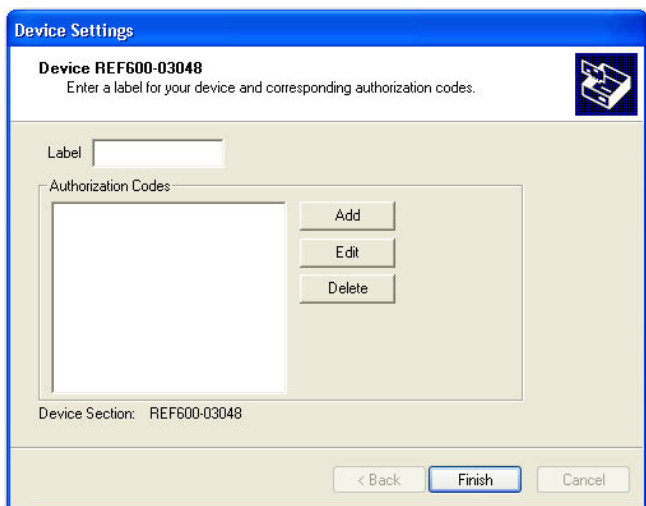




Found New Hardware (Windows Vista)



Found New Hardware (Windows XP)



Make Sure Potentiostat Has Been Detected by Windows

Because you installed the Gamry software before you installed the potentiostat, the potentiostat should be recognized automatically, and the correct software drivers installed.

To check hardware detection:

- 1) Turn on the PC.
- 2) After the operating system starts, you will see a message that an instrument from the Reference Family Instrument has been detected.

If running Windows Vista, the “Found New Hardware” screen appears. Select “Locate and install driver software”. You may then need to acknowledge a security prompt on the next screen.

If running Windows XP, the “Found New Hardware Wizard” asks questions about the software installation. When asked about connecting to the Internet, select “No”. When asked about searching the computer to load drivers automatically, select “Yes”. After working through the wizard, go to the next step.

If running Windows 7, these dialog boxes will not appear. Drivers that were pre-installed by the installation process will automatically be loaded.

- 3) *If the Reference Family of instruments was detected*, remove the Gamry CD from the drive.

Tip: If you see a message that refers only to “USB Device”, the operating system could not find the Gamry drivers.

Try this: Unplug the USB cable connecting the Reference 600, shut down Windows and turn off the PC. Power up the PC and wait until Windows has completed normal startup. Shut down Windows and turn off the PC. Reinsert the USB cable. Power up the PC.

Completing Software Setup

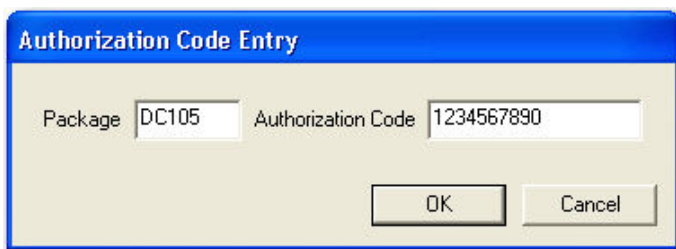
Assign Label (Name) to Potentiostat

The potentiostat’s Device Settings window opens automatically the first time the PC is started after the Framework software has been installed successfully. This window shows the model number of the potentiostat, followed by its serial number.

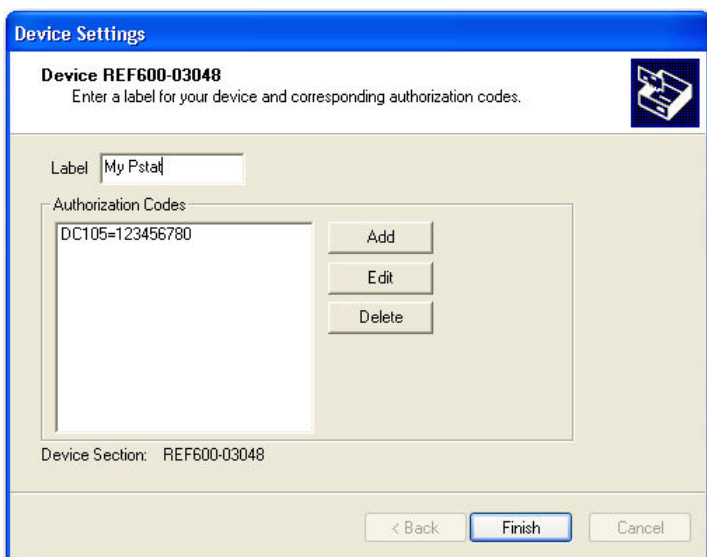
Use this window to specify the text label that will be used to identify the potentiostat on Gamry software screens. The maximum size of a label is ten characters (including spaces).

To assign a name to a potentiostat, type the name in the Label field in the Device Settings window.

Do not click on **Finish**. You must enter Authorization Codes as described below.



Tip: Current packages are: DC105, EIS300, PWR800, PHE200, PV220, EN120, EFM140, CPT110, VFP600, ESA410, eChemBasic, eChemDC, and eChemAC.



Tip: If you want to change the name of a potentiostat or enter Authorization Codes after setup, use the Properties window for the potentiostat.

To edit the potentiostat's properties:

- 1) Open the Control Panel by selecting **Start > Control Panel**.
- 2) Open the Device Manager window by: *In Vista/7*, **System and Maintenance > System > Device Manager** from the Task Window on the left. *In Windows XP*: **Start > Control Panel > System**. Open the Device Manager window by clicking on the **Device Manager** button on the Hardware tab in the System Properties window.
- 3) In the Device Manager window, expand the "Gamry Instruments Devices" list.
- 4) Display a context menu by right-clicking on the current name of the potentiostat and selecting **Properties**.
- 5) Click on the **Device Settings** tab.
- 6) Edit the properties as needed.
- 7) Click on **OK** to save the changes.

Enter Authorization Codes During Setup

The Device Settings window for each potentiostat contains a listbox showing Authorization Codes for every Gamry software package that has been authorized.

You must enter an Authorization Code for a software package before you can use it to run experiments. If you try to run an experiment with an unlicensed package, a message naming the Authorization Code you need will be displayed.

To enter the Authorization Codes:

- 1) Find the ten-digit Authorization Codes on the license shipped with the potentiostat.
- 2) In the Device Settings window for the potentiostat, use the **Add** button to access the Authorization Code Entry window. Enter the name of the Package and corresponding Authorization Code. Press **OK**. Repeat for each package included on your license.

Authorization Codes are linked to a specific potentiostat's serial number. Be sure to enter the Authorization Codes that were shipped with the potentiostat named in the Device Settings window.
- 3) When you have labeled the potentiostat and entered all Authorization Codes, click on **Finish**.

Calibration

Launch Gamry Framework

The process of installing the Gamry Framework software adds two new icons to the desktop: **Gamry Framework** and **My Gamry Data**.



Use the **Gamry Framework** icon to launch the Gamry Framework software and open the Framework main window.



Use the **My Gamry Data** icon to access the default location for experiment data. You can use the Framework **Options** menu to specify a different destination for experiment data files.

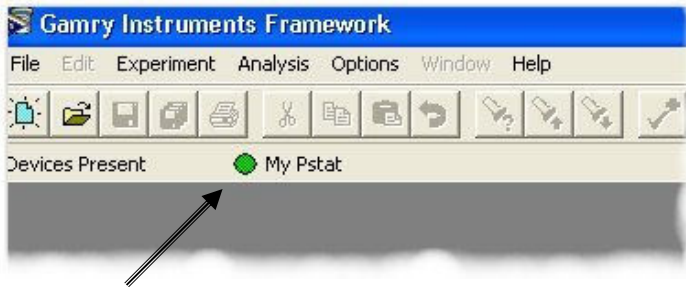
Icons will not be created for each individual software package. You will use the Gamry Framework user interface to access software packages such as DC105, EIS300, etc.

You can also use the **Start > Programs > Gamry Instruments** path to open the Gamry Framework main window.

Make Sure Potentiostat Is Recognized by Framework

When you restarted the PC after installing the Gamry hardware and software, you confirmed that the operating system recognized the potentiostat and found the appropriate software drivers.

Now confirm that the Gamry Framework software recognizes the potentiostat.



Virtual LED

To confirm hardware recognition:

- 1) Look at the top left corner of Framework screen (below the menu bar). When the Framework window first opens "Initializing Devices" is displayed.
- 2) After the potentiostat has been initialized, the "Devices Present" line should display the name (label) assigned to the potentiostat. A green "virtual LED" should also be displayed to symbolize that the potentiostat is ready for use.
When a potentiostat is in use, the virtual LED turns yellow. The virtual LED and potentiostat label should always be displayed.
- 3) *If the name of the potentiostat is displayed and the virtual LED is green, you are ready to calibrate the potentiostat as described in the next subsection.*
- 4) *However, if a potentiostat's name is not displayed, the Reference 600 may not be installed correctly. Check the power connections and USB cable. Make sure the USB connector on the computer is enabled or connected. Verify the Power and USB LED's on the instrument are lit.*

Calibration Preparation

Before you can use a new potentiostat, you must calibrate it using the Universal Dummy Cell 4 shipped with the potentiostat.

Recalibrate a potentiostat every six months or after moving the potentiostat to a different environment.

To prepare for calibration:

- 1) Let the Reference 600 warm up for at least 30 minutes.
- 2) If you are in a noisy environment, construct or buy a Faraday Cage.
- 3) Make sure the cell cable supplied with the potentiostat is firmly connected to the potentiostat to be calibrated.

Start Calibration Utility and Select the Potentiostat

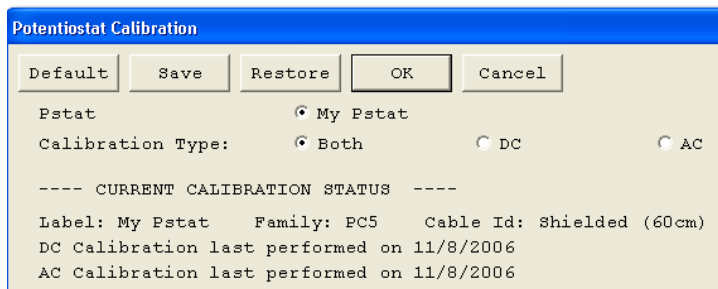
If you see a green virtual LED and the name of the potentiostat installed in the PC, you are ready to calibrate.

A **Utilities** submenu in the **Experiment** menu is always available in Framework. The Utilities submenu always includes the **Calibrate Instrument** choice.

The other submenus available from the **Experiment** menu depend on the selections you made when installing the Gamry software. An Experiment submenu is available for every Gamry software package you installed, although you can run experiments only for authorized software packages.

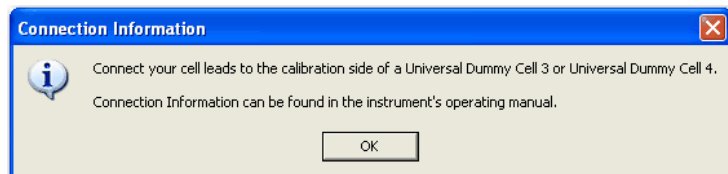
To start the calibration utility:

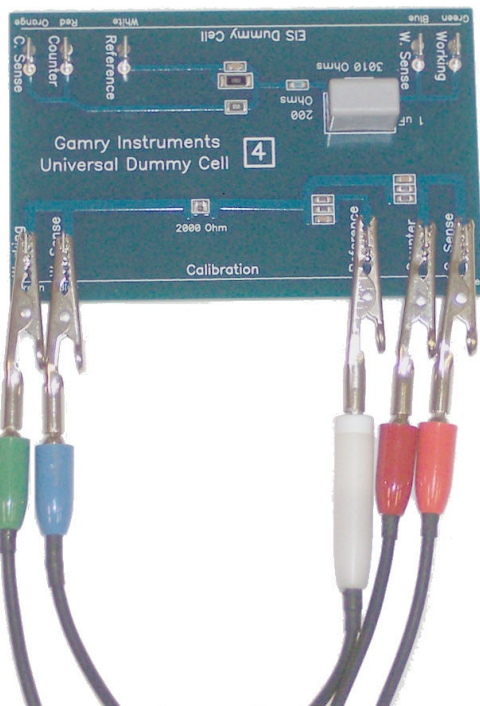
- 1) Open the Potentiostat Calibration window by selecting **Experiment > Utilities > Calibrate Instrument** from the Framework menu bar.
- 2) In the Potentiostat Calibration window select the option button labeled with the name of the potentiostat to be calibrated.
- 3) Select the calibration type "Both".
- 4) Click on **OK**. The Potentiostat Calibration window remains open. The Connection Information window will open. It contains general instructions for using the Universal Dummy Cell (UDC). Specific instructions for using the Universal Dummy Cell are in this document (see below).



Tip: If the selected potentiostat has never been calibrated, no Current Calibration Status information is displayed in the bottom half of the Potentiostat Calibration window. The calibration information in a Reference 600 is stored inside the unit and moves with the unit from computer to computer.

However, if the potentiostat has already been calibrated this window displays information about the most recent calibration.





Attach Cell Leads to Calibration Side of UDC 4 (or UDC3)

When calibrating a Reference 600 Potentiostat, use the Universal Dummy Cell 4 that is included with the potentiostat. The Universal Dummy Cell 3 is also fine. *The older Universal Dummy Cell 2 is not sufficient for calibrating a Reference 600 Instrument.*

It is easy to connect the cell leads correctly, because they are color coded. You can always refer to your Gamry mouse pad for the meanings of the cell cable lead colors.

To attach cell leads to the Universal Dummy Cell:

- 1) Use the alligator clips on the cell cable to make the following connections to the posts on the Calibration edge of the Universal Dummy Cell 4.

Clip Color	Calibration Connector Label on Universal Dummy Cell 4
white	Reference
red	Counter
orange	C. Sense
blue	W. Sense
green	Work

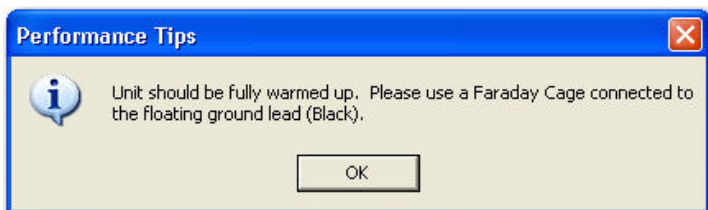
- 2) *If you use the Gamry Calibration Shield (recommended) or any Faraday Cage, see page 15 for grounding instructions.*

Start Calibration

When the potentiostat has been connected to the Universal Dummy Cell you are ready to start the calibration:

To start calibration:

- 1) Click on **OK** in the Calibration Information window. The Performance Tips window is displayed.
- 2) Click on **OK** in the Performance Tips window.
- 3) Confirm that the virtual LED for the potentiostat selected in the Potentiostat Calibration window has turned yellow (to show that the potentiostat is in use).
- 4) Sit back and wait.



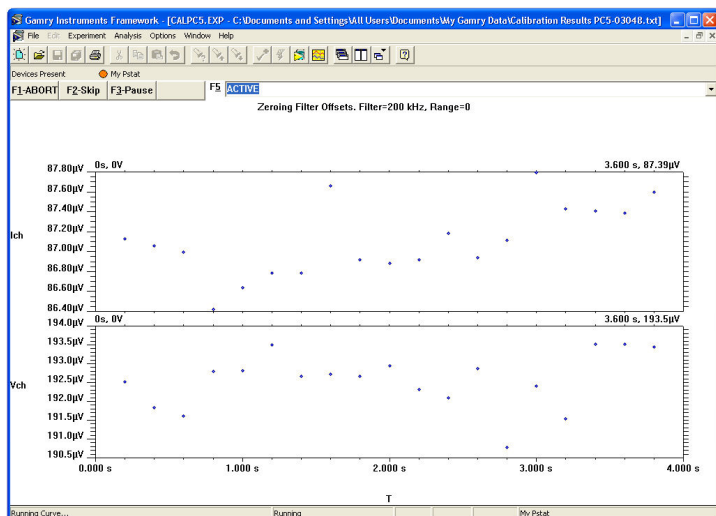
Wait for Completion

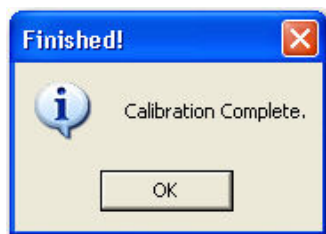
No operator action is required during the main portion of the calibration, which takes about ten minutes.

During calibration, a series of messages are displayed in the status bar at the bottom of the Framework window. Data are displayed in the Framework window. It is impossible to make sense of this data; don't bother trying!

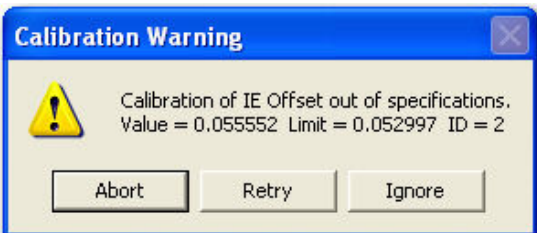
Towards the end of the calibration, you will be asked whether or not to calibrate the thermocouple input. Most users can select No, at which point the calibration will complete. If you select Yes, follow the on-screen instructions for calibrating the thermocouple.

At the conclusion of the calibration, one of two messages will be displayed.





Message Displayed Following Successful Calibration



Example of Message Displayed Following Unsuccessful Calibration

If the calibration was successful, you will see the "Calibration Complete" message. Clear the message by clicking on **OK**.

If the calibration was not successful, you will see an error message that tells which test failed, and the measured value that was outside the valid range, which is also displayed. Clear the message and continue to the next test by clicking on **Ignore**.

Calibration Results

Calibration results are stored in non-volatile memory inside the Reference 600 as well as in a file in the "My Gamry Data" folder. The name of the file is "Calibration Results <SN>.txt", where <SN> is the serial number of the Reference 600.

The next time you select this potentiostat in the Potentiostat Calibration window, the information in the calibration results file will be displayed. When you calibrate the potentiostat again, the results file will be overwritten.

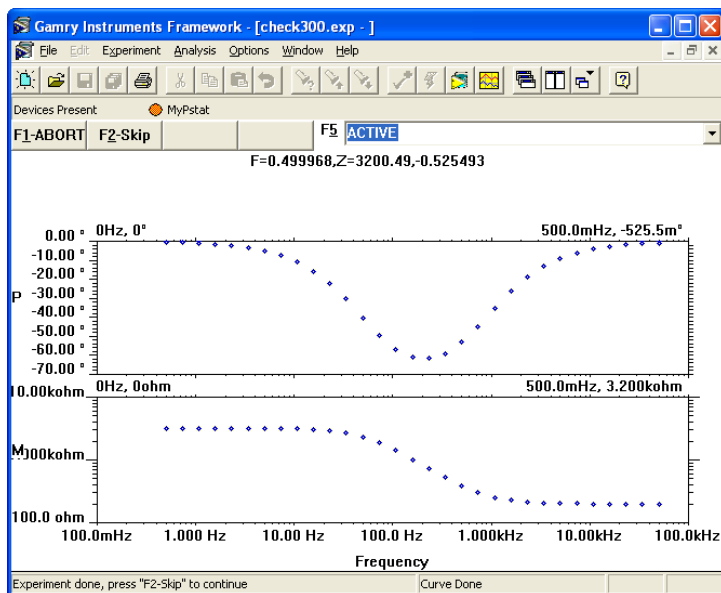
If the Calibration Was Not Successful

If the calibration was not successful, check the following after clicking on **Retry** and trying again.

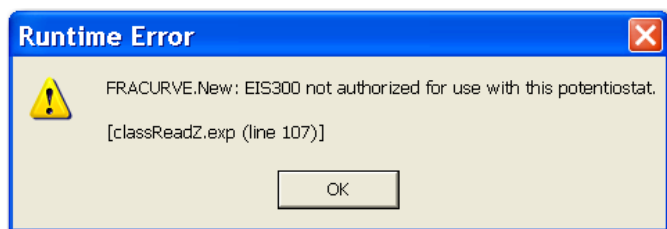
- Make sure the cell cable is firmly connected to the potentiostat.
- Check that the cell leads are clipped to the correct connectors on the Universal Dummy Cell. (If in doubt, check the color codes on the Gamry mouse pad.)
- Be sure the welds on the underside of the Universal Dummy Cell are not touching a conductive surface.

Also, wait until the Reference 600 warms up (to drive off any moisture inside the unit), and then try again.

If you have checked all of the above and waited until the Reference 600 is completely warmed up, but the calibration fails again, then try again using a Faraday Cage. If calibration fails a third time, even though you used a Faraday Cage, contact Gamry.



EIS300 “Check300” Test Results



Error for Not Authorized Package

Optional Test

Introduction

After the Gamry Framework and Gamry software packages have been installed, and the potentiostat has been calibrated, you are ready to use the Framework interface to run experiments with the Gamry software packages. General instructions for running experiments are on page 15.

If you bought the EIS300 Electrochemical Impedance Spectroscopy Software, you can run an EIS test experiment using Universal Dummy Cell 3 or 4.

This test is not required. However, it is a good idea to run it to check potentiostat functionality and to become familiar with the process of running experiments through the Framework interface.

EIS300 “Check300” Test

Using the EIS edge of the Universal Dummy Cell and the “Check300.exp” script (found in the “Scripts” folder), you can run a Potentiostatic EIS scan on the Universal Dummy Cell.

To do the EIS300 test:

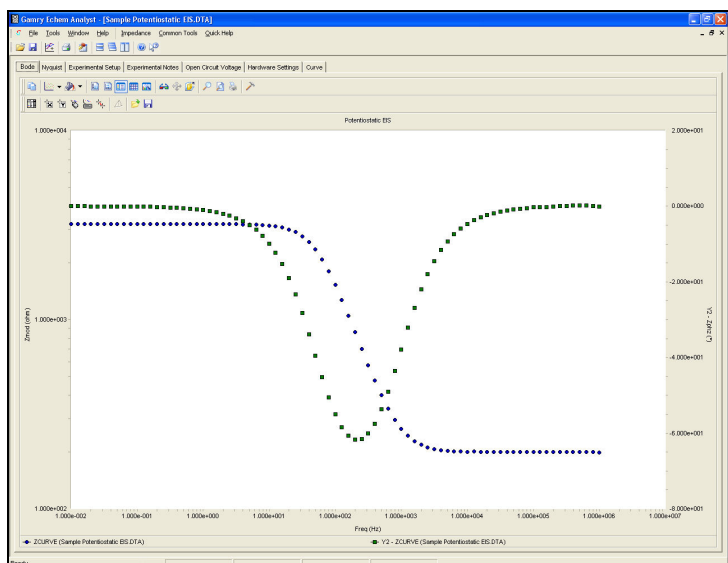
- 1) Connect the clips on the cell cable to the appropriate posts on the EIS edge of the Universal Dummy Cell 4. (For color codes, see page 15 or wait until the script displays connection information.)
- 2) Run the “Check300.exp” script that is stored in the “Scripts” folder. No parameter values apply to this test. The results are automatically written to a file named “Check300.dta”.
- 3) When the test has concluded, compare your results with the screenshot (see left).

If the plot in your Framework window is similar to ours, the potentiostat passed the test.

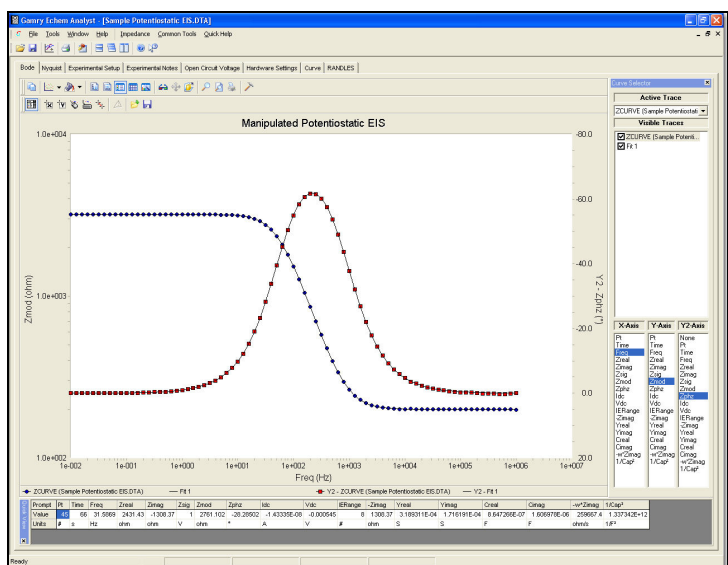
If the plot in your Framework window is not similar to ours, try the experiment again with the Universal Dummy Cell in a Faraday Cage, such as the Calibration Shield.

If your plot is not similar to ours after running the test with the Universal Dummy Cell in a Faraday Cage, contact us.

If your Potentiostat is not authorized for the EIS300 software package, this experiment will not run. You will receive an error like the one shown here. This message is similar to other messages generated when experiments from not-authorized packages are ran. See Page 9 to correct the code entry or your local Gamry representative to purchase the additional code.



(A) Sample Potentiostatic EIS data file as it opens in the Gamry Echem Analyst.



(B) Manipulated form of the same data file — the secondary Y-axis (Phase Angle) is reversed, data are fitted, axes are formatted, and both the Curve Selector and Point Information Viewer are open.

Accessing Gamry Echem Analyst

Installing the Gamry Echem Analyst software adds a new icon to the desktop: **Echem Analyst**.



You can also use the **Start > Programs > Gamry Instruments** path to open the Gamry Echem Analyst main window. A shortcut to the Echem Analyst main window is also available in Framework. Click on **Analysis** in the Framework menu bar to launch the Echem Analyst software.

Manipulating Sample Data

Files containing sample data are written to the “My Gamry Data” folder when the Gamry Framework software is installed. You can begin to gain an appreciation for the rich set of features available in Echem Analyst by manipulating this sample data.

To open a data file, select **File > Open** from the Echem Analyst menu bar. The sample data filenames start with “Sample” and include the name of the type of experiment, such as “Sample Cyclic Voltammetry.dta”. Figure A is an example of a data file as it opens.

Some functions available in the Echem Analyst window are applicable to many types of experiments. For example, commands in the **Tools** menu are available to display point information, change the current convention, and make other choices that affect how data is displayed. The **Common Tools** menu choices, such as **Linear Fit**, **Add Constant E**, and **Add Constant I**, let you manipulate data.

Other functions, specific to the experiment type, are available from the menu named for the type of experiment. For example, when analyzing data gathered with Potentiostatic EIS, the Impedance menu contains commands for functions specific to EIS300 experiments.

Similarly, some tabs in the display, such as Experimental Setup and Hardware Settings, are common to all types of experiments. Other tabs, such as Bode, Nyquist, and Randles (the selected Fit model) in Figure B, are specific to particular types of experiments.

After you have used Echem Analyst menu functions to manipulate the data and its presentation, you can use **File > Save As** to save your changes, along with the experiment data, as .GData files. You can open the .GData file later (by selecting **File > Open**) and see the data presented exactly as you saved it.

Sources of More Information

Technical specifications for the potentiostat are in the hardware manual on the CD shipped with the instrument.

More information about the Gamry software is available in Help, accessible from the Framework and Echem Analyst menu bars.

Gamry manuals (as .pdf files) are on the software CD. Access the files from the setup screen you used to install the Gamry software. You may also browse to the locations, or use the installation notes button on setup. For example, if your CD drive is D, the path to the setup screen is D:\autorun.

The Readme file is installed in the same folder as the Gamry software.

More information about Gamry potentiostats, software, and electrochemical applications is available at the Gamry Web site: <http://www.gamry.com>

Contacting Gamry

Do not hesitate to contact us if you have questions or problems during the installation or operation of the potentiostat.

Contact Support

Telephone: Within the USA and Canada, phone 1-877-367-4267. From other countries phone +1-215-682-9330.

The support team is available from 8:15 AM to 6:00 PM US Eastern Standard Time.

Fax: 215-682-9331

Mail: ~~Gamry Instruments, Inc.~~
Warminster, PA 18974
USA

Reference Information

Procedure for Experiments

The procedure for running any experiment is:

- 1) **Connect the cell cable leads** to the appropriate electrodes on the electrochemical cell. Refer to the table on this page or the Gamry mouse pad for the color coding of the leads.
- 2) **Select the script** you want to run.

To use a standard Gamry script, select it from the application submenus, such as **DC Corrosion** or **Electrochemical Impedance**, accessible from the **Experiment** menu.

To use a custom script, select it from the "Scripts" folder (**Experiment > Named Scripts**). This folder contains all scripts (standard and custom), as well as global scripts used by other scripts.
- 3) **Name the .dta output file** that will contain the experiment data generated by the test. This ASCII text file will be created in "My Gamry Data" (or the new destination you specify using the **Options** menu).
- 4) **Specify parameter values.** When the window used to run a script opens, the parameter values most recently used for this script will be displayed. At this point you have several choices.
 - You can edit the parameter values. You can save the new values to a ".set" file for future use by clicking on **Save**. When assigning a name to the saved parameter values, it is a good idea to include the name of the script or experiment in the file name.
 - You can use values stored in an existing .set file by clicking on **Restore**. A window will open that contains all the .set files for all experiment types. Pick a file of values for this type of experiment.
 - You can use the Gamry default values for this script by clicking on **Default**.
- 5) **Start the experiment and activate the potentiostat** by clicking on **OK** in the experiment window. Depending on the script you selected, one or more messages may be displayed containing advice for running the experiment.
- 6) *If any messages are displayed*, follow the advice, and then acknowledge the messages by clicking on **OK**.
- 7) While the experiment is running, plotted data will be displayed. Messages in the status bar allow you to monitor progress of the test.

You can cancel the experiment by clicking on **F1-Abort** (no test data stored), skip the current stage of the experiment by clicking on **F2-Skip**, or temporarily halt the experiment by clicking on **F3-Pause**.
- 8) At the conclusion of the experiment, an "Experiment Done" message is displayed. The message contains instructions for closing the window used to start the test.
- 9) Press the F2 (Skip) button.

Grounding

The Reference 600 is a floating ground instrument. Its cell cable contains only a floating ground lead (black clip). There is a grounding lug on the rear of the Reference 600 to earth ground the instrument. If you are working mostly with non-grounded samples, you should connect earth ground to this lug.

When using a Faraday Cage, connect the cell ground lead to the cage to achieve the lowest noise. However, **disconnect earth ground from the instrument ground lug if the experiment setup is earth grounded**. For example, if the Faraday Cage, electrolyte

circulation pump, or a metal vessel for the cell is grounded, do not connect earth ground to the grounding lug.

Gamry File Types

The types of files generated or used by Gamry software are described below.

File Type	What It Stores
.exp	experiment script written in Gamry Explain™ experiment control language; in "Scripts" folder accessed via Framework Experiment menu
.dta	experiment results; in "My Gamry Data" folder
.Gdata	experiment results that have been manipulated in Echem Analyst; in "My Gamry Data" folder
.txt	calibration results; in "My Gamry Data" folder; file name is "calibration results <SN>.txt", where <SN> is the serial number of the Reference 600
.set	experiment parameter values; in "Sets" folder under software installation location

General Instructions for Connecting Leads

The leads on Gamry cell cables are color-coded for easy installation. The meanings of the colors are below. Color codes are also on the Gamry mouse pad shipped with the potentiostat.

Clip Color	Electrode
green	working
blue	working sense
white	reference
red	counter
orange	counter sense
black	floating ground

Notes:

blue and green leads – If you have used other manufacturers' potentiostats and cell cables, you may be puzzled by Gamry's use of two leads for working electrodes. The two working electrode leads make it possible to devise a greater variety of experiments. However, to do a standard three-electrode potentiostatic experiment, connect both the green and blue clips to the working electrode (or clip the green to the blue, and then clip the blue to the electrode).

orange lead – The orange lead is used only in ZRA (zero resistance ammeter) experiments.

Gamry™, Series G 300™, Series G 750™, Reference 600™, PCI4/300™, PCI4/750™, PC4™, PC3™, FAS2™, FAS1™, Gamry Framework™, and Echem Analyst™ are trademarks of Gamry Instruments, Inc.

Microsoft®, Windows®, and Microsoft Internet Explorer® are registered trademarks of Microsoft Corporation in the United States and/or other countries.

Copyright 2011 Gamry Instruments, Inc. No part of this document may be copied or reproduced in any form without the prior written consent of Gamry Instruments, Inc.